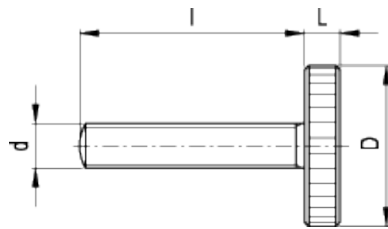


# DIN 653-NI

Knurled grip knobs with threaded pin



## technical informations

### Material

AISI 303 stainless steel, sandblasted matte finish.

### Assembly

Threaded pin.

### Features and applications

AISI 303 stainless steel, thanks to its high resistance to corrosion, allows the application of these knobs on machines and equipment in those sectors where laws or particular hygienic, climatic and environmental factors make it mandatory to use corrosion resistant materials.

Standard Elements	Main dimensions		Threaded pin		Weight
	$d_2$	k	$d_1$	l	g
DIN 653-M4-8-NI	16	3.5	M4	8	6
DIN 653-M4-10-NI	16	3.5	M4	10	6
DIN 653-M4-12-NI	16	3.5	M4	12	7
DIN 653-M4-16-NI	16	3.5	M4	16	7
DIN 653-M5-10-NI	20	4	M5	10	11
DIN 653-M5-12-NI	20	4	M5	12	12
DIN 653-M5-16-NI	20	4	M5	16	12

DIN 653-M5-20-NI	20	4	M5	20	13
DIN 653-M5-25-NI	20	4	M5	25	22
DIN 653-M6-12-NI	24	5	M6	12	20
DIN 653-M6-16-NI	24	5	M6	16	21
DIN 653-M6-20-NI	24	5	M6	20	22
DIN 653-M6-25-NI	24	5	M6	25	23
DIN 653-M6-30-NI	24	5	M6	30	24
DIN 653-M8-16-NI	30	6	M8	16	37
DIN 653-M8-20-NI	30	6	M8	20	39
DIN 653-M8-25-NI	30	6	M8	25	40
DIN 653-M8-30-NI	30	6	M8	30	42
DIN 653-M10-20-NI	36	8	M10	20	72
DIN 653-M10-25-NI	36	8	M10	25	74
DIN 653-M10-30-NI	36	8	M10	30	76
DIN 653-M10-40-NI	36	8	M10	40	80



ELESA and GANTER models all rights reserved in accordance with the law. Always mention the source when reproducing our drawings.

**STANDARD MACHINE ELEMENTS WORLDWIDE**